

NEW
 DUPLEX 2205
 Stainless Steel
 cylinder



ECOHEAT TD

ECOHEAT TD is the new solar thermodynamic heat pump series for the domestic hot water production.

These system include one or more solar thermodynamic panels installed outdoors, able to extract solar energy and the available energy of the surrounding environment. Then, the energy is used by the thermodynamic cycle to heat water, achieving high efficiency and important savings for the house.

ECOHEAT is a high quality product with outstanding performance available in 7 different capacities suitable for any kind of housing.



Reduces energy use by up to 60%.



LCD touchscreen



Possibility of dehumidifying and refreshing ambient air.



Extracts heat from sun, rain and air.



Aluminium condenser fitted around the tank.



Automatic anti-legionella function.



DHW up to 60°C with heat pump operation.



High quality cylinder made of **SS DUPLEX 2205**



Compliant with Eco-design and Eco-labelling.

Technical data

Cylinder	EH085 TD		EH115 TD		EH200 TD		EH260 TD		EH300 TD		EH500 TD	
Capacity, L	85		115		200		260		300		500	
Maximum operating pressure, bar	6											
Heat pump data												
Energy Efficiency Class	A											
Load profile	M		M		L		XL		XXL			
Input power range (1), W	1430-2560				1430-2560				2860-5120			
Maximum temp. HP, °C	450-540				450-540				900-1080			
COP (1), W	2,5-4,5				2,5-4,6				2,5-4,6			
Maximum temperature HP, °C	60											
Maximum temp. electric element, °C	62											
Coolant	R134a											
Electric data												
Electric element power, W	230 / 1 / 50											
Maximum current, A	1500										2000	
Maximum power absorbed, W	2100				2100				3100			
Thermodynamic panel												
Number of panels	1										2	
Dimensions, mm	1700x800											
Maximum operating pressure, bar	10											
Refrigerant inlet/ outlet, inch	3/8-1/4											

(1) Depending of ambient temperature and incident solar radiation



Advanced controlled

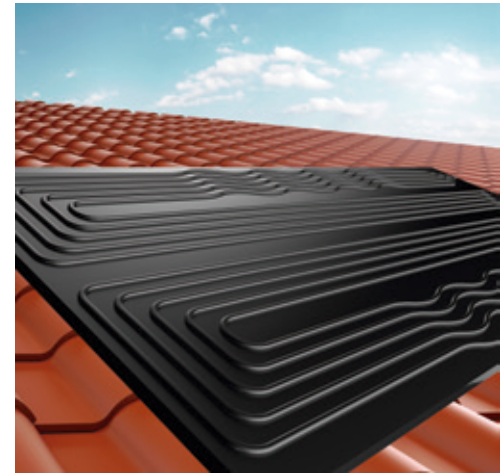


Features:

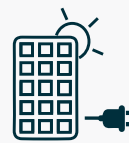
- Touchscreen
- Easy to use and learn
- **Automatic Antillegionella disinfection:** Automatically the system carries out a thermal shock disinfection avoiding any possibility of bacterial growth.
- Screen lock
- Specific alarms setted to avoid any possible anomalies

Operating modes

- **Automatic:** DHW production is handled by the HP module and the electric back-up.
- **Eco:** «reduced» programme enabled, DHW production is handled only by the HP module
- **Boost:** A single boost operates the heat pump and the heating element to heat up the water in the shortest time to the setting temperature



Compatible with Photovoltaics

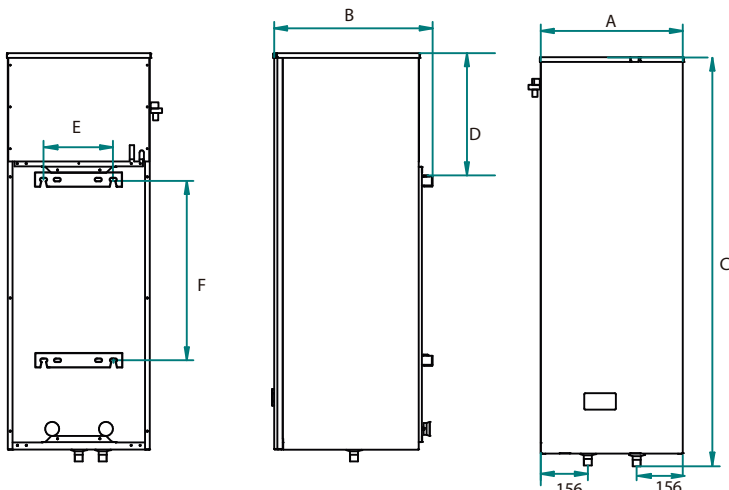


The controller includes a connection port with the inverter module which allows starting up the heat pump when there is an energy excess from the photovoltaic panels.

Dimensions

Dimensions and connections	EH085 TD	EH115 TD	EH200 TD	EH260 TD	EH300 TD	EH500 TD
Configuración	Wall-mounted			Floor-mounted		
A, mm	480			585		696
B, mm	510			587		740
C, mm	1195	1420	1297	1527	1945	2066
D, mm	560	560	797	956	1323	1455
E, mm	-	540	217			245
F, mm	-			94	194	325
Water inlet / outlet, inch				3/4		1
Refrigerant inlet / outlet, inch				3 / 8-1 / 4		1 / 2 -3 / 8

Wall- Mounted



Floor- Mounted

